

# About WALI

## Vision

The Western Agriculture Initiative (WALI) supports BCAC as the lead industry advocate on farm labour priorities in British Columbia and the central labour resource organization for B.C. farmers and ranches.

## Mission

To grow a strong, sustainable, and competitive agriculture sector by helping farmers find and keep a productive workforce.

## Key Values



### A Safe & Motivating Workplace

Provide an environment where staff feel supported, committed, and connected to their work.



### Providing Value to Members

Influence BCAC's value proposition by using a performance strategy that can achieve actionable results.



### B.C.'s Agriculture Sector is Vital

Growing community understanding of agriculture to secure producer's social licence to operate.



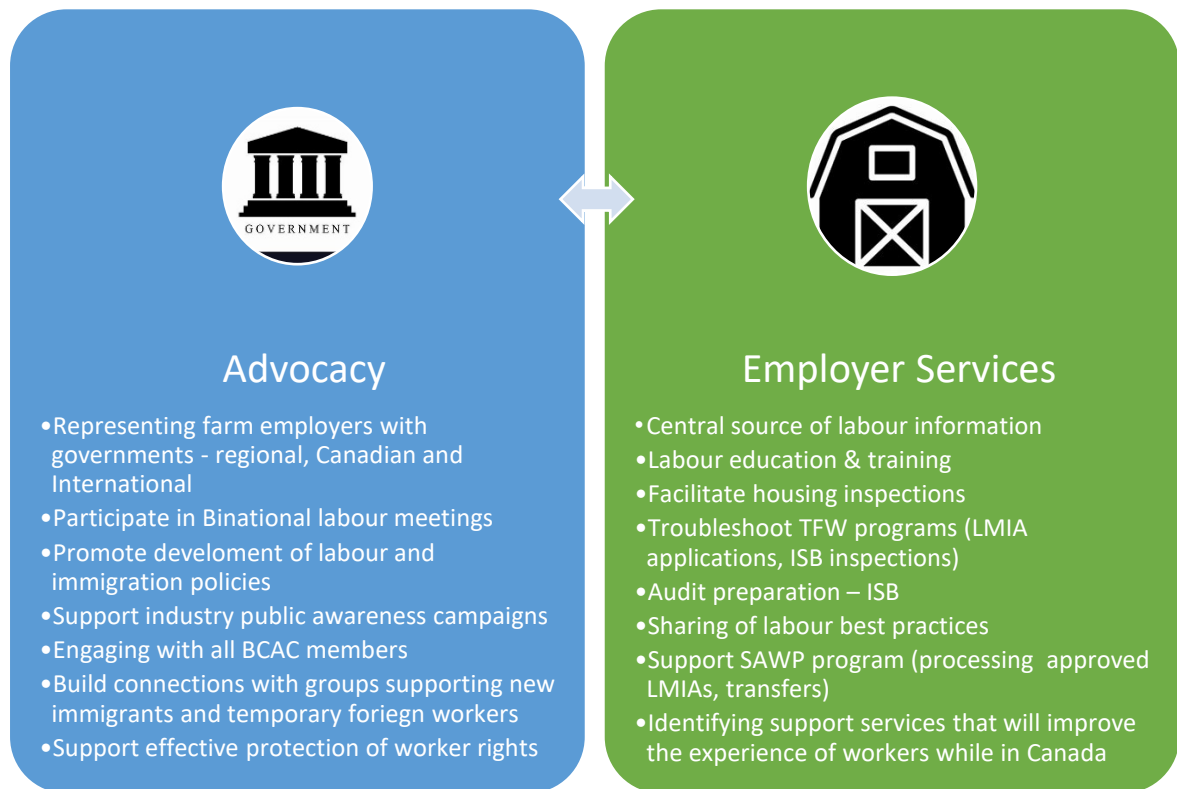
### A Strong Future for Agriculture

Partner with all stakeholders to grow the economic, social, and environmental worth of the sector.

## Roles

WALI fulfills its mission by:

1. Advocating to government for labour policies and programs that support a safe, sustainable, and effective labour supply.
2. Supporting farm employers navigate labour regulations and programs by providing fee-for-service support when commercial services are inadequate



WALI currently does not provide advice or services regulated by the Canadian Immigration Act or the BC Temporary Foreign Worker Protection Act.

**Examples of what WALI is working on:**

***Advocacy***

- Participating in the development of a National Workforce Strategy for Agriculture and Food and Beverage Manufacturing. Solving the farm labour shortage will take creative and strategic investments by farmers and food processors.
- Participating with CFA, FVGA, and other provincial farm labour organizations to ensure that changes to the temporary foreign worker programs do not cause workers to become unavailable to farmers.
- Working with the BC Ministry of Health to ensure that the TFW worker housing is safe for workers, the standards are respected by all employers and workers, and the public understands that housing is regulated.
- Working with SAWP partner countries and Canada to increase the housing deduction for both SAWP and AgStream employers.
- Working with ESDC to ensure the integrity of housing inspections.
- Working with Integrity Services Branch to improve processing times for integrity inspections and to clarify requirements.
- Meeting with foreign governments wanting to increase the number of farm workers in B.C.

## **Services**

- Implementing online Employer Portal to improve access to information relating to housing inspections and SAWP LMIA processing.
- Hosting information sessions with employers and AgStream recruiters.
- Conducting SAWP processing information sessions to assist employers preparing their LMIA applications.
- Developing “best practices” information brochures to help employers attract and retain workers.
- Developing improved training and monitoring for housing inspections.
- Collaborating with the SAWP source countries to improve the fit of new workers (ensure that they have the abilities required in the LMIA) and improve processing times.
- Providing information for TFW workers through the HubConnect app.
- Partnering with AgSafe to ensure that OH&S programs work for TFWs.
- Assessing organizations that support new Canadians and TFWs to identify strategic partners that align with WALI’s values.

## **About WALI & BCAC**

WALI is a wholly owned subsidiary of BC Agriculture Council (BCAC). BCAC is the lead industry advocate for key sector-wide priorities in British Columbia. Our mission is to grow a strong, sustainable, and competitive agriculture sector through building industry consensus and advancing public policy. We achieve this by delivering a unified voice for the sector to government through our member farm associations that in turn, represent approximately 96% of provincial farm gate sales in B.C.